



**Weymouth BID**

June 2015

01/06/2015 to 05/07/2015



REGION - South West

Monday to Sunday

COUNT TYPE: Footfall Counts

**Monthly Footfall**

	Year to Date % Change		Year on Year % Change		Month on Month % Change	
	2015	2014	2015	2014	2015	2014
Weymouth BID					▲ 9.2 %	
South West	▼ -1.9 %	▼ -2.1 %	▼ -3.4 %	▼ -0.2 %	▲ 7.7 %	▲ 7.9 %
UK	▼ -1.5 %	▼ -0.1 %	▼ -2.6 %	▼ -1.6 %	▲ 3.8 %	▲ 4.2 %

**Headlines**

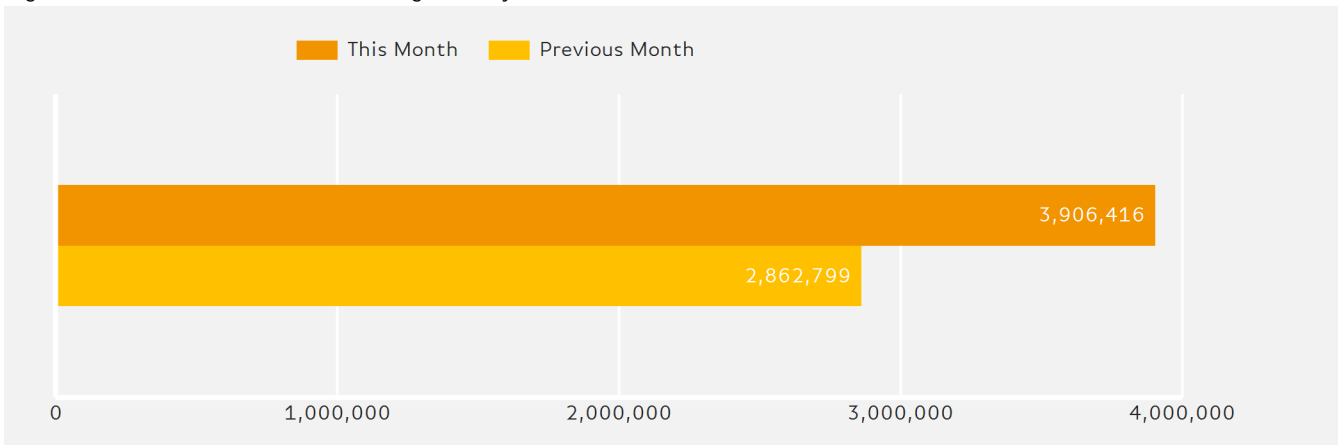
Footfall month commencing 1 June 2015 was 3,906,416.

The busiest day in month commencing 1 June 2015 was Saturday 4 July with 306,572 visitors.

The peak hour of the month was 14:00 on Saturday with footfall of 36,134

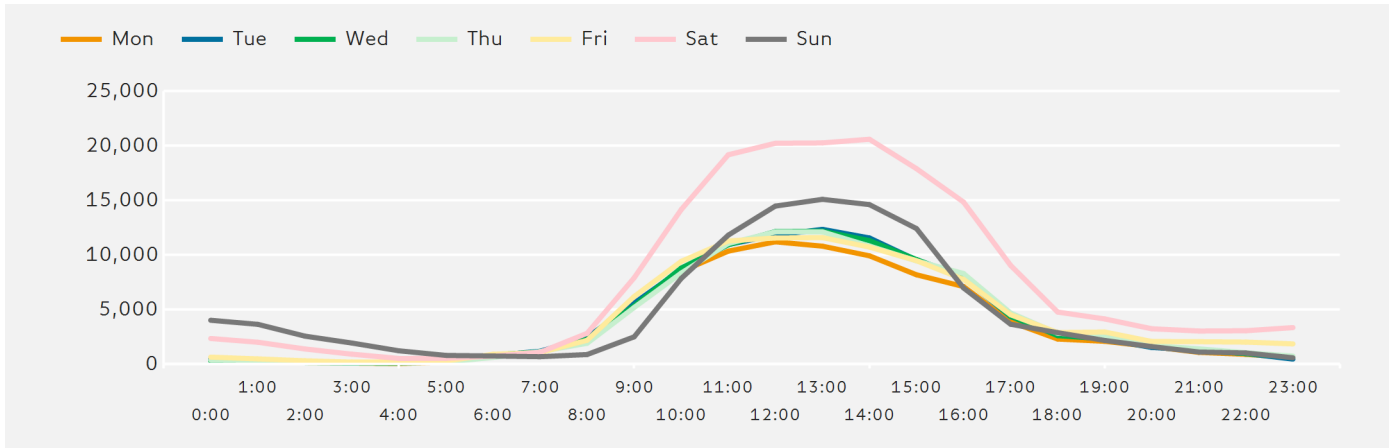
**Footfall Totals by Month**

Figures shown below are calculated using monthly totals.



### Footfall by Hour

The figures shown below are calculated using a weekly average



### Weather



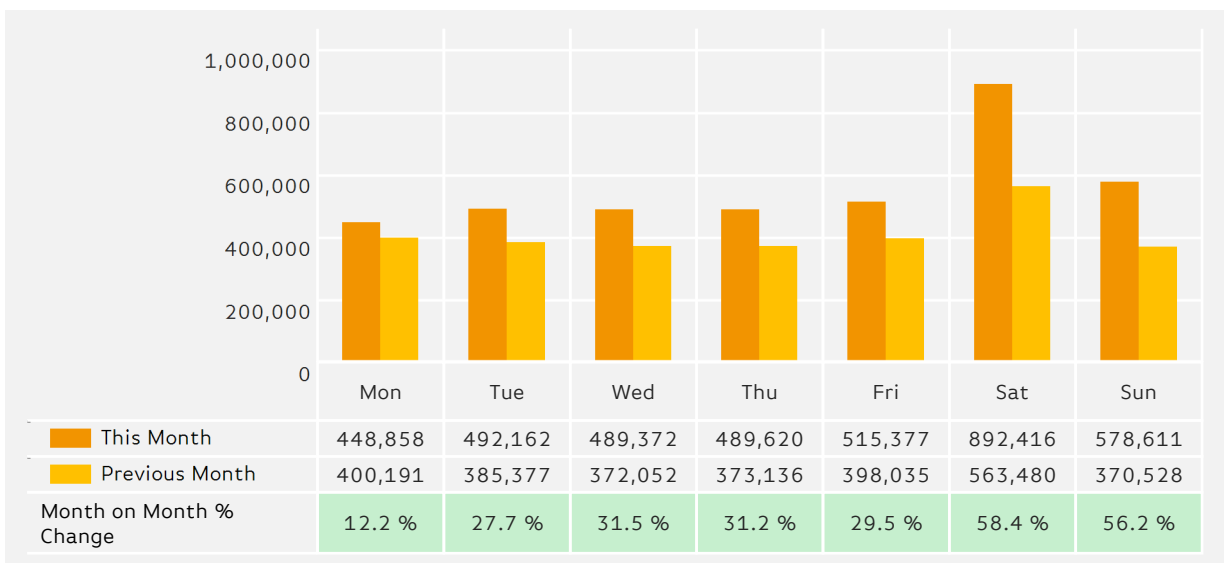
Number of days this month		21	8	6
Number of days same month last year	1	25	7	2

### Average Temperature

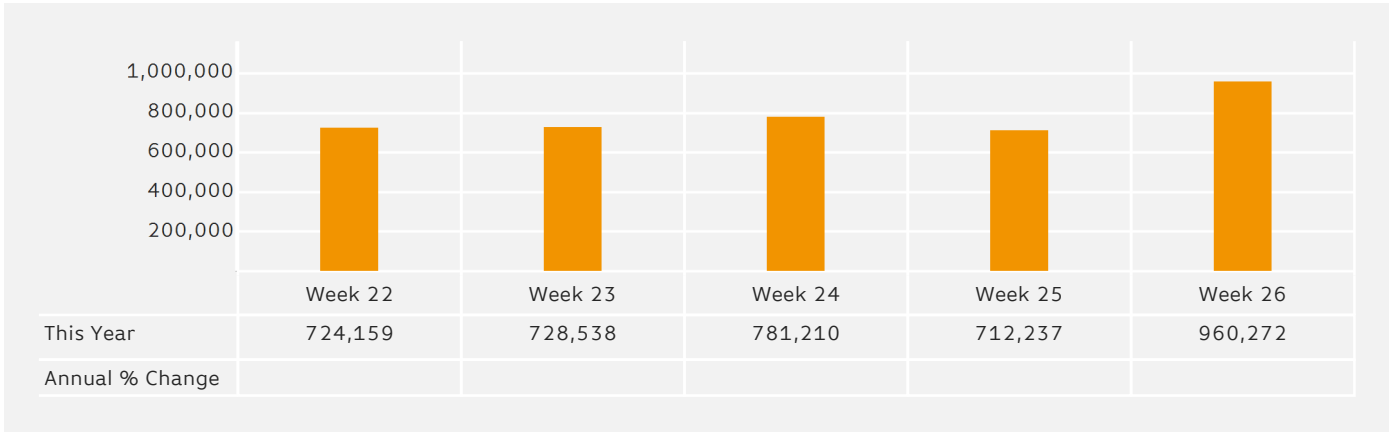
Average Temperatures	Maximum Temperature	Minimum Temperature
2015	19.5	10.6
2014	-265.8	296.7

### Footfall by Day

The figures shown below are calculated using monthly totals.

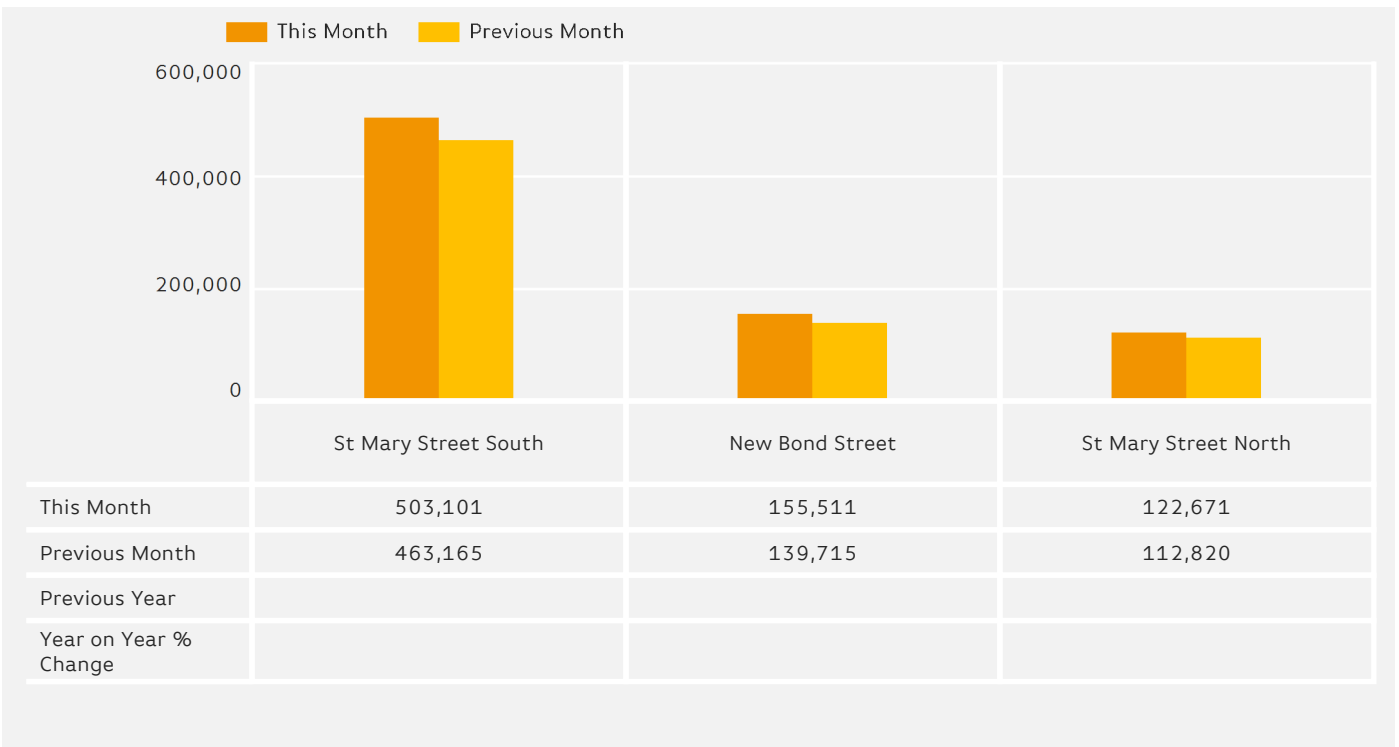


### Footfall by Week of Month



### Footfall Totals

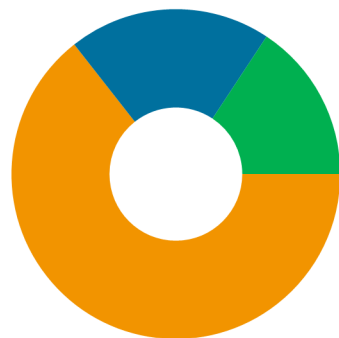
The figures shown below is calculated using weekly averages.



### Footfall Totals

Counting By Location - Main Locations Only

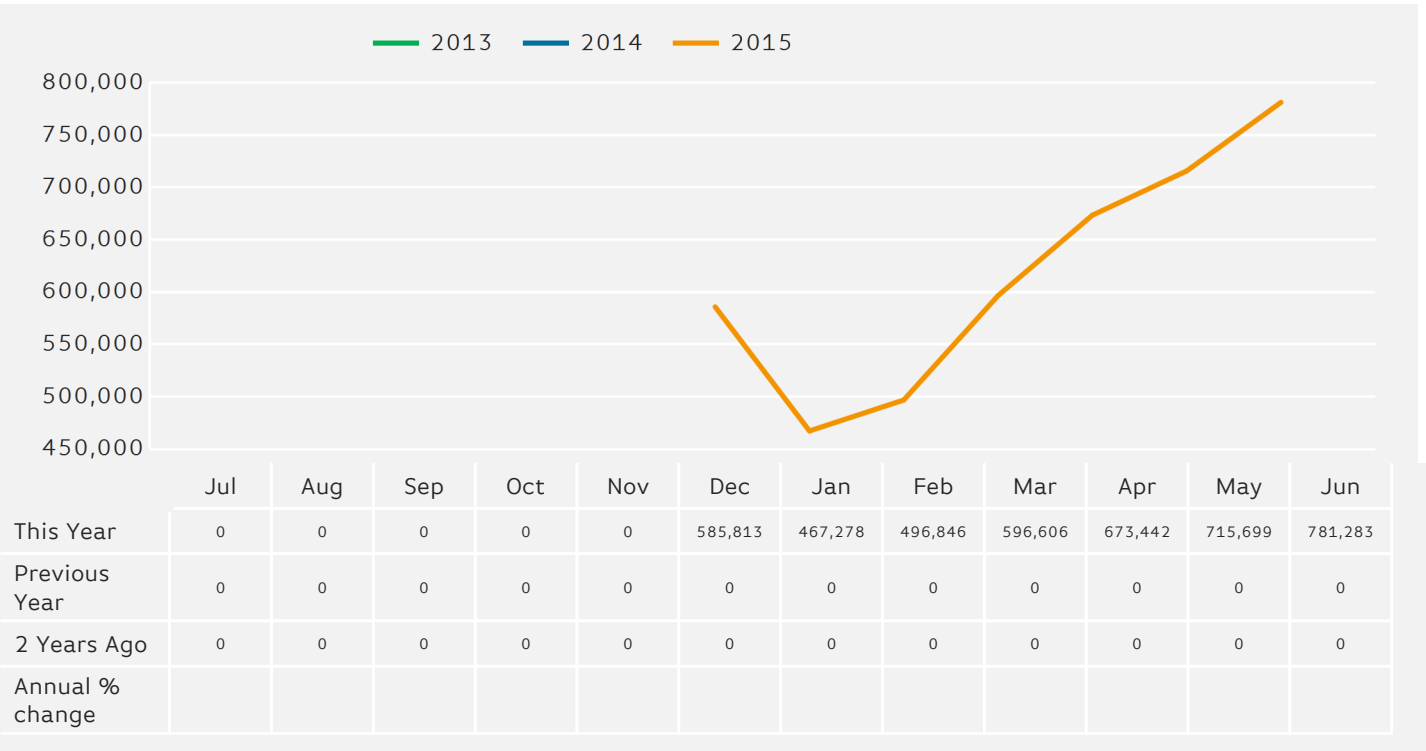
The figures shown below are based on weekly averages



- St Mary Street South, 64.4 %
- New Bond Street, 19.9 %
- St Mary Street North, 15.7 %

## Footfall by Month

The figures shown below are calculated using weekly averages.



Year to Date % Change is the annual % change in footfall from January of this year compared to the same period last year.  
 Year on Year % Change is the % change in footfall for this week compared to the same week in the previous year.  
 Week on Week % Change is the % change in footfall for this week from the previous week.